

Source Inlet Connection (SSI)

For installations where there is heavy gas usage or where extra control is needed prior to the primary gas control system (SGP), a Source Inlet Connection (SSI) may be used. An SSI typically includes isolation, vent, and purge options. Additionally, there will be hoses or hard-tubing pigtails to connect each bottle to the manifold.

The SSI is limited to a pressure rating of 4351 psig (300 bar).

SSI features include:

- Configurable bottle spacing to accommodate a wide range of bottle storage methods
- Bottle identification tags
- Ability to isolate individual gas bottles or entire manifold to maximize safety

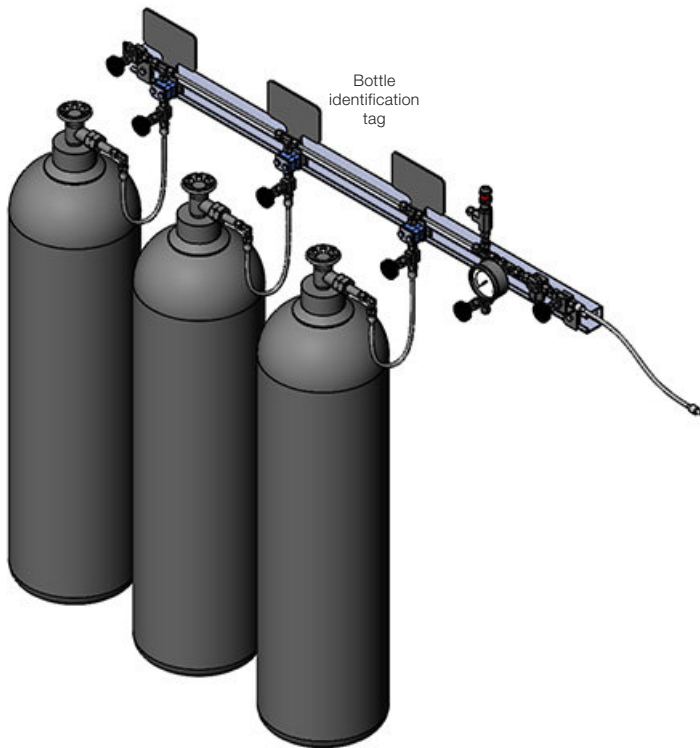


Fig. 4 SSI for Three Bottles

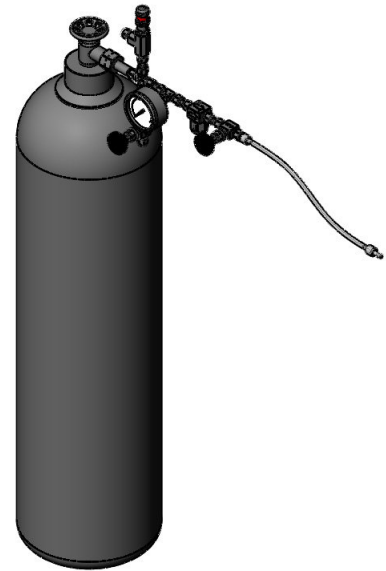


Fig. 5 SSI for One Bottle

System may include:

- 40 series ball valve
- Swagelok tube fittings
- Seamless tubing
- TF series filter
- R series relief valve
- Swagelok hose
- PGI series gauges (63B)
- D series nonrotating-stem needle valve
- Bracket/misc hardware

SSI continued

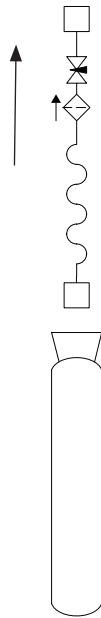


Fig. 6 SSI P&ID for One Bottle

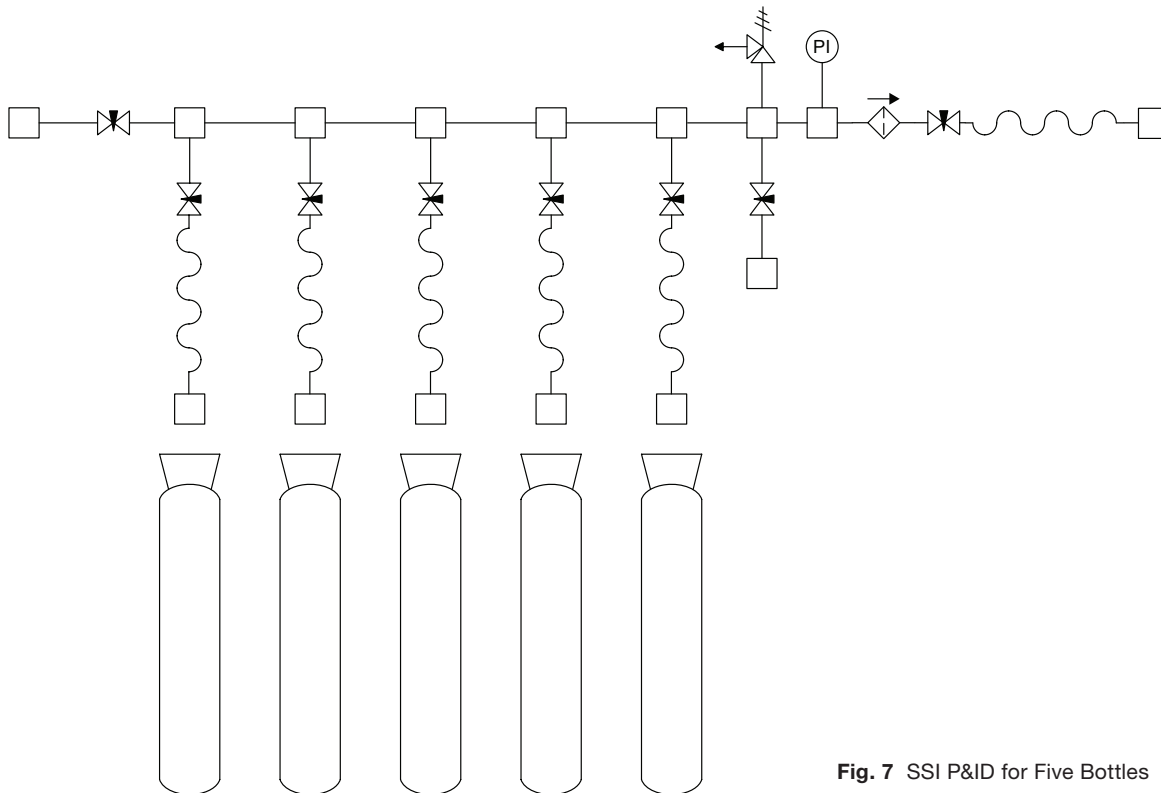


Fig. 7 SSI P&ID for Five Bottles

SSI continued

Ordering Information

Build an ordering number by combining the designators in the sequence shown below.

SSI **1** **2** **3** **4** **5** **6** **7** **8** **9** **10** **11** **12** **13**
N 4 C G 8 1 1 0 1 1 TH S8 E

1 Gas Type

- N = Inert
- H = Hydrogen
- O = Oxygen®

① A gas type of oxygen may limit selections available for other components.

2 Number of Bottles

3 Bottle Connections

See reference table

4 Bottle Connection Size

See reference table

5 Tube OD

- 4 = 1/4 in.
- 8 = 1/2 in.
- A = 6 mm
- B = 12 mm

6 Isolation Valve

- 0 = None
- 1 = On main line
- 2 = On individual bottles
- 3 = On main line and individual bottles

7 Vent Valve

- 0 = None
- 1 = On main vent

8 Purge Valve

- 0 = None
- 1 = On main vent
- 2 = On individual bottles

9 Relief Valve

- 0 = None
- 1 = Yes
- 2 = Country/regional standard

10 Pressure Gauge

- 0 = None
- 1 = Yes

11 Inlet Connection

- 00 = None
- S4 = 1/4 in. Swagelok tube fitting
- S8 = 1/2 in. Swagelok tube fitting
- M6 = 6 mm Swagelok tube fitting
- M2 = 12 mm Swagelok tube fitting
- F4 = 1/4 in. Female NPT
- TH = TH hose
- XT = XT hose
- FM = FM hose
- FX = FX hose
- 8R = Thermoplastic hose
- FP = Pigtail
- MP = Metric pigtail
- FR = Rectoil
- MR = Metric rectoil

12 Outlet Connection

- 00 = None
- S4 = 1/4 in. Swagelok tube fitting
- S8 = 1/2 in. Swagelok tube fitting
- M6 = 6 mm Swagelok tube fitting
- M2 = 12 mm Swagelok tube fitting
- F4 = 1/4 in. Female NPT
- TH = TH hose
- XT = XT hose
- FM = FM hose
- FX = FX hose
- 8R = Thermoplastic hose
- FP = Pigtail
- MP = Metric pigtail
- FR = Rectoil
- MR = Metric rectoil

13 Options

- H = Helium leak test
- E = ASME 3.1 material certification

Note: Multiple options can be added to the end of an ordering number.

	Character	Position 3: Connection Standard					Examples	Position 3 & 4
		CGA	BS341 <=250Bar	BS341 <=300Bar	DIN477-1 <=200Bar	DIN477-5		
Position 4: Connection Type	1		1	31	1		CGA 350	CD
	2	680		32			CGA 660	CJ
	3	695	3				BS10	B0
	4		4				BS31	31
	5					54	DIN10	D0
	6				5	55	DIN9	D9
	7				6	56		
	8				7	57		
	9			38	8	58		
	0		10	30	9	59		
	A				10	50		
	B	320	12		11	60		
	C		13		12			
	D	350	14		13			
	E		15		14			
	F	540	16					
G	580							
H	590							
J	660							

SSI continued**Dimensions**

Dimensions, in inches (millimeters), are for reference only and are subject to change.

